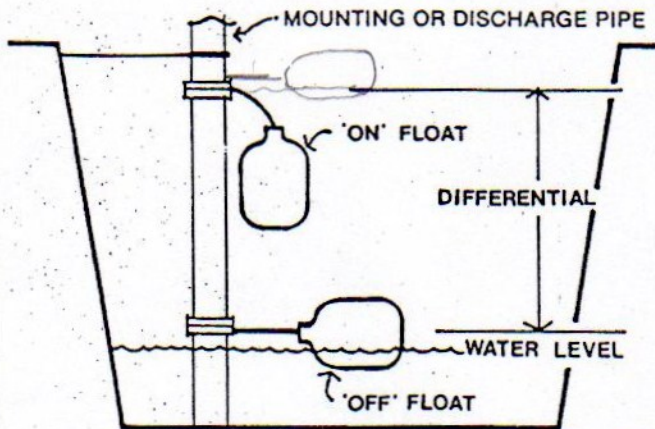


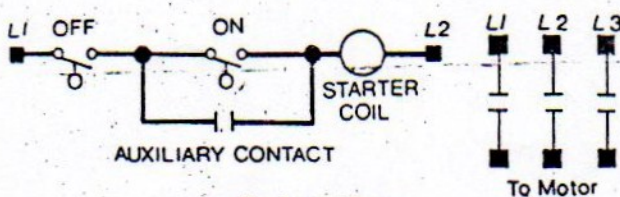
TYPICAL INSTALLATION



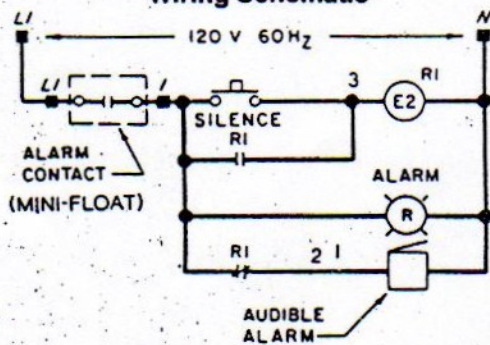
General Comments

- 1) Never work in the sump with the power on.
- 2) Attach the Type P Mini-Floats to the mounting pipe or the pump discharge pipe. The 'off' float should be below the 'on' float in a 'pump out' application.
- 3) Arrange the Mini-Floats so they do not tangle or hang up.
- 4) Thread the cable strap through the buckle with the ratchet pawl; cinch up tight; thread excess strapping through outer buckle slot.
- 5) Measuring the difference between mounting points gives the 'pump down' differential.

Typical Simplex Wiring Schematic



Typical Alarm Wiring Schematic



SPECIFICATIONS

Cable - 18-3 SJO W/A 34 x 41 strand. 90°C.
DIAMETER .30

Float - Polypropylene.
Clamp - Stainless Steel.

Wiring
White-common
Red-Normal Open
Black-Normal Closed

Ind. Con. Eq.
125 VA @ 115 VAC

Component Switch Rating 4.5A @ 120V., Res.
2.2A @ 230V., Res.

Temperature Rating - 60 C.

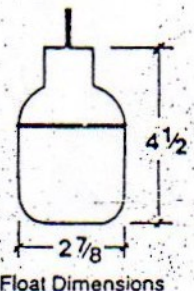
Normally Open Blue Housing
Normally Closed

ELECTRICAL CONFIGURATION	CABLE LENGTH	SUSPENDED TYPE 'S'	PIPE MOUNTED TYPE 'P'
		MODEL NO.	MODEL NO.
NORMALLY OPEN CLOSED	10	S M 10 NO NC	P M 10 NO NC
	15	S M 15 NO NC	P M 15 NO NC
	20	S M 20 NO NC	P M 20 NO NC
	25	S M 25 NO NC	P M 25 NO NC
	30	S M 30 NO NC	P M 30 NO NC

SUBMITTAL APPROVAL

NAME _____

DATE _____



* Important Notes - Mini-floats are pilot duty devices. They cannot be used to directly power pump motors. Also, do not use Mini-Floats in gasoline or other combustibles. These devices can be used with intrinsically safe relays for some hazardous locations. See Sec. 500 of NEC.

This product contains mercury. Dispose of in accordance with Local, State and Federal Regulations so that mercury does not contaminate the environment.

DWN BY	DATE
CKD BY	DATE
JTP	7 20-80
APPD BY	DATE
JTP	7-20
PROJECT NAME	
Mini-Float	
FACTORY ORDER NO.	



anchor scientific inc.
Industrial Park, Long Lake, Mn. 55356
612-473-7115

Typical installation and specification data for Mini-Floats

DWG. NO. 2510-B